



ALS Canada Ltd.  
2103 Dollarton Hwy  
North Vancouver BC V7H 0A7  
Phone: 604 984 0221 Fax: 604 984 0218 www.alsglobal.com

To: KAMINAK GOLD CORPORATION  
1020 - 800 WEST PENDER STREET  
VANCOUVER BC V6C 2V6

Page: 1  
Finalized Date: 2-JUN-2012  
This copy reported on  
2-NOV-2012  
Account: KAMGOL

**CERTIFICATE WH12109335**

Project: Coffee

P.O. No.: KGC-12-1280

This report is for 30 Drill Core samples submitted to our lab in Whitehorse, YT, Canada on 28-MAY-2012.

The following have access to data associated with this certificate:

TOM BOKENFOHR

JAMES SCOTT

TIM SMITH

**SAMPLE PREPARATION**

ALS CODE	DESCRIPTION
LOG-21	Sample logging - ClientBarCode
WEI-21	Received Sample Weight
LOG-23	Pulp Login - Rcvd with Barcode
CRU-QC	Crushing QC Test
CRU-31	Fine crushing - 70% <2mm
PUL-QC	Pulverizing QC Test
SPL-21	Split sample - riffle splitter
PUL-31	Pulverize split to 85% <75 um

**ANALYTICAL PROCEDURES**

ALS CODE	DESCRIPTION	INSTRUMENT
Au-ICP21	Au 30g FA ICP-AES Finish	ICP-AES
ME-ICP41	35 Element Aqua Regia ICP-AES	ICP-AES

To: KAMINAK GOLD CORPORATION  
ATTN: ALS MINERALS

This is the Final Report and supersedes any preliminary report with this certificate number. Results apply to samples as submitted. All pages of this report have been checked and approved for release.

Signature:

Colin Ramshaw, Vancouver Laboratory Manager



2103 Dollarton Hwy  
North Vancouver BC V7H 0A7

Phone: 604 984 0221      Fax: 604 984 0218      [www.alsglobal.com](http://www.alsglobal.com)

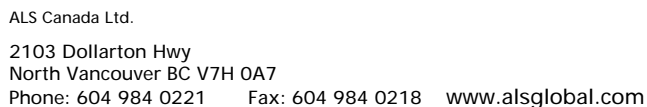
**TO: KAMINAK GOLD CORPORATION  
1020 - 800 WEST PENDER STREET  
VANCOUVER BC V6C 2V6**

Page: 2 - A  
Total # Pages: 2 (A - C)  
Finalized Date: 2-JUN-2012  
Account: KAMGOL

Project: Coffee

**CERTIFICATE OF ANALYSIS    WH12109335**

Sample Description	Method Analyte Units LOR	WEI-21	Au-ICP21	ME-ICP41	ME-ICP41	ME-ICP41	ME-ICP41	ME-ICP41	ME-ICP41	ME-ICP41	ME-ICP41	ME-ICP41	ME-ICP41	ME-ICP41	ME-ICP41	ME-ICP41
		Recvd Wt.	Au	Ag	Al	As	B	Ba	Be	Bi	Ca	Cd	Co	Cr	Cu	Fe
		kg	ppm	ppm	%	ppm	ppm	ppm	ppm	ppm	%	ppm	ppm	ppm	ppm	ppm
		0.02	0.001	0.2	0.01	2	10	10	0.5	2	0.01	0.5	1	1	1	0.01
KAM082571		2.04	0.001	<0.2	0.95	5	<10	150	0.5	2	0.92	<0.5	4	8	11	1.64
KAM082572		1.60	0.001	<0.2	1.05	6	<10	30	1.1	2	2.15	<0.5	9	5	7	2.09
KAM082573		1.63	0.001	<0.2	1.29	12	<10	80	0.9	3	1.50	<0.5	13	4	6	2.20
KAM082574		1.70	0.001	<0.2	0.67	12	<10	30	0.8	3	2.86	<0.5	10	3	5	1.94
KAM082575		1.73	0.001	<0.2	1.02	17	<10	190	0.8	3	1.94	<0.5	7	3	5	1.27
KAM082576		1.95	0.001	<0.2	0.99	9	<10	90	0.7	3	1.60	<0.5	6	2	7	1.19
KAM082577		1.70	0.004	<0.2	0.78	7	<10	70	0.7	2	2.05	<0.5	5	2	3	1.12
KAM082578		1.83	0.001	0.4	1.00	6	<10	90	0.8	2	2.28	<0.5	6	2	4	1.21
KAM082579		1.71	0.002	<0.2	0.99	9	<10	60	0.7	4	1.80	<0.5	8	2	8	1.29
KAM082580		0.04	0.001	0.3	1.60	5	<10	100	<0.5	3	0.85	<0.5	10	30	24	2.49
KAM082581		1.10	0.002	<0.2	0.60	9	<10	40	0.7	3	5.03	<0.5	7	5	10	2.14
KAM082582		1.30	0.003	<0.2	1.03	7	<10	50	0.7	2	2.96	<0.5	8	3	6	1.77
KAM082583		1.12	0.002	<0.2	1.00	6	<10	80	0.7	3	2.28	<0.5	6	3	9	1.52
KAM082584		0.69	0.002	<0.2	1.01	35	<10	100	0.9	<2	3.15	<0.5	11	12	32	1.98
KAM082585		0.99	0.003	0.2	1.27	16	<10	100	0.9	3	1.18	<0.5	9	2	16	1.28
KAM082586		0.88	0.003	<0.2	0.89	8	<10	100	0.9	4	2.14	<0.5	8	1	9	1.25
KAM082587		0.95	0.005	<0.2	1.03	30	<10	110	1.2	2	3.82	<0.5	17	1	29	3.26
KAM082588		0.87	0.001	<0.2	1.13	36	<10	100	1.6	3	6.27	<0.5	17	9	25	3.43
KAM082589		0.66	0.010	<0.2	1.03	34	<10	100	1.0	3	4.45	<0.5	13	19	28	2.41
KAM082590		0.04	0.448	0.3	0.57	576	<10	1000	<0.5	3	0.65	<0.5	2	94	10	6.44
KAM082591		0.76	0.002	<0.2	1.11	8	<10	100	1.0	3	4.59	<0.5	10	3	7	2.54
KAM082592		0.96	0.001	<0.2	1.36	4	<10	130	0.9	2	4.04	<0.5	11	5	13	3.10
KAM082593		0.76	0.003	<0.2	1.16	6	<10	130	0.7	2	3.93	<0.5	11	5	10	2.93
KAM082594		0.81	0.003	<0.2	0.94	10	<10	180	0.5	<2	4.03	<0.5	12	5	8	2.88
KAM082595		0.86	0.002	<0.2	1.14	19	<10	140	0.7	2	4.50	<0.5	14	5	11	2.91
KAM082596		1.12	0.002	<0.2	1.13	10	<10	130	0.7	2	4.19	<0.5	11	6	11	3.00
KAM082597		1.82	0.002	<0.2	1.49	8	<10	150	0.5	2	4.05	<0.5	12	10	13	3.03
KAM082598		1.92	0.001	<0.2	3.17	4	<10	500	<0.5	2	4.06	<0.5	21	159	25	3.61
KAM082599		1.84	0.001	<0.2	3.48	4	<10	380	<0.5	<2	3.59	<0.5	23	151	43	3.54
KAM082600		0.04	0.001	0.3	1.58	5	<10	100	<0.5	2	0.85	<0.5	10	29	24	2.48



Page: 2 - B  
Total # Pages: 2 (A - C)  
Finalized Date: 2-JUN-2012  
Account: KAMGOL

**CERTIFICATE OF ANALYSIS    WH12109335**

Sample Description	Method Analyte Units LOR	ME-ICP41	ME-ICP41	ME-ICP41	ME-ICP41	ME-ICP41	ME-ICP41	ME-ICP41	ME-ICP41	ME-ICP41	ME-ICP41	ME-ICP41	ME-ICP41	ME-ICP41	ME-ICP41	ME-ICP41
		Ga	Hg	K	La	Mg	Mn	Mo	Na	Ni	P	Pb	S	Sb	Sc	Sr
		ppm 10	ppm 1	% 0.01	ppm 10	% 0.01	ppm 5	ppm 1	% 0.01	ppm 1	ppm 10	ppm 2	% 0.01	ppm 2	ppm 1	ppm 1
KAM082571		<10	1	0.19	60	0.56	359	<1	0.04	5	270	8	0.07	<2	1	77
KAM082572		<10	<1	0.19	60	0.84	357	1	0.05	11	380	5	0.04	2	3	54
KAM082573		<10	1	0.35	70	0.83	273	2	0.04	6	410	16	0.42	<2	4	42
KAM082574		<10	<1	0.08	60	0.96	276	1	0.02	5	360	7	0.43	<2	4	50
KAM082575		<10	<1	0.28	60	0.66	209	2	0.02	2	350	7	0.32	<2	2	39
KAM082576		<10	<1	0.21	60	0.54	189	2	0.02	1	320	11	0.20	<2	1	33
KAM082577		<10	<1	0.20	50	0.68	232	1	0.01	1	300	7	0.16	2	1	41
KAM082578		<10	<1	0.26	50	0.78	246	2	0.01	1	250	8	0.22	<2	1	46
KAM082579		<10	<1	0.20	60	0.57	193	2	0.01	2	280	13	0.17	3	1	48
KAM082580		<10	<1	0.12	<10	0.75	404	2	0.08	23	610	4	0.05	<2	5	40
KAM082581		<10	<1	0.13	40	1.86	393	3	0.01	2	220	8	0.30	<2	2	95
KAM082582		<10	<1	0.17	40	0.97	286	2	0.01	4	290	8	0.37	2	2	59
KAM082583		<10	<1	0.20	50	0.74	238	2	0.01	4	360	8	0.29	<2	2	55
KAM082584		<10	<1	0.25	30	0.94	421	<1	0.01	11	890	10	0.41	6	5	65
KAM082585		<10	<1	0.22	60	0.32	164	1	0.01	3	380	9	0.46	4	2	30
KAM082586		<10	<1	0.22	50	0.42	219	1	0.01	2	320	7	0.29	2	2	52
KAM082587		<10	<1	0.28	30	1.24	598	1	0.02	5	1370	8	0.77	4	4	93
KAM082588		<10	1	0.29	20	2.37	725	<1	0.02	19	1070	11	0.13	6	6	169
KAM082589		<10	<1	0.30	20	1.00	659	<1	0.01	17	1380	11	0.24	4	4	141
KAM082590		<10	11	0.09	10	0.03	13	4	0.03	7	340	4	0.23	33	2	176
KAM082591		<10	1	0.38	20	0.46	771	<1	0.02	9	1610	9	0.06	<2	1	114
KAM082592		<10	<1	0.49	20	0.95	718	<1	0.03	9	1620	9	0.03	2	2	117
KAM082593		<10	<1	0.42	30	1.28	746	<1	0.03	11	1810	11	0.05	2	2	159
KAM082594		<10	<1	0.30	30	1.27	742	<1	0.03	11	1770	7	0.05	2	1	142
KAM082595		<10	<1	0.36	20	1.29	895	<1	0.03	12	1710	8	0.05	2	2	151
KAM082596		<10	<1	0.37	30	1.40	789	<1	0.03	12	1910	9	0.06	<2	2	83
KAM082597		<10	<1	0.48	30	1.38	746	<1	0.03	15	1690	8	0.08	2	2	120



ALS Canada Ltd.  
 2103 Dollarton Hwy  
 North Vancouver BC V7H 0A7  
 Phone: 604 984 0221 Fax: 604 984 0218 www.alsglobal.com

To: KAMINAK GOLD CORPORATION  
 1020 - 800 WEST PENDER STREET  
 VANCOUVER BC V6C 2V6

Page: 2 - C  
 Total # Pages: 2 (A - C)  
 Finalized Date: 2-JUN-2012  
 Account: KAMGOL

Project: Coffee

**CERTIFICATE OF ANALYSIS WH12109335**

Sample Description	Method Analyte Units LOR	ME-ICP41	ME-ICP41	ME-ICP41	ME-ICP41	ME-ICP41	ME-ICP41	ME-ICP41
		Th	Ti	Ti	U	V	W	Zn
		ppm	%	ppm	ppm	ppm	ppm	ppm
		20	0.01	10	10	1	10	2
KAM082571		30	0.01	<10	<10	13	<10	49
KAM082572		30	0.01	<10	<10	16	<10	31
KAM082573		30	0.02	<10	<10	14	<10	40
KAM082574		30	<0.01	<10	<10	10	<10	33
KAM082575		30	0.01	<10	<10	6	<10	18
KAM082576		30	<0.01	<10	<10	5	<10	16
KAM082577		30	<0.01	<10	<10	3	<10	17
KAM082578		30	<0.01	<10	<10	3	<10	17
KAM082579		30	<0.01	<10	<10	4	<10	19
KAM082580		<20	0.13	<10	<10	61	10	45
KAM082581		20	<0.01	<10	<10	6	<10	16
KAM082582		20	<0.01	<10	<10	6	<10	16
KAM082583		20	<0.01	<10	<10	7	<10	18
KAM082584		<20	<0.01	<10	<10	35	<10	36
KAM082585		30	<0.01	<10	<10	6	<10	17
KAM082586		30	<0.01	<10	<10	5	<10	18
KAM082587		<20	<0.01	<10	<10	57	<10	40
KAM082588		<20	<0.01	<10	<10	67	<10	48
KAM082589		<20	<0.01	<10	<10	32	<10	38
KAM082590		<20	0.01	10	<10	91	10	15
KAM082591		<20	0.01	<10	<10	21	<10	45
KAM082592		<20	0.01	<10	<10	28	<10	53
KAM082593		<20	0.01	<10	<10	28	<10	56
KAM082594		<20	0.01	<10	<10	26	<10	56
KAM082595		<20	<0.01	<10	<10	27	<10	57
KAM082596		<20	<0.01	<10	<10	28	<10	57
KAM082597		<20	0.01	<10	<10	33	<10	58
KAM082598		<20	0.11	<10	<10	97	<10	51
KAM082599		<20	0.24	<10	<10	127	<10	48
KAM082600		<20	0.13	<10	<10	60	10	45